

Four  
bedroom  
home.

# The Florence

(Detached)

The Florence is a four-bedroom home which is ideal for families. To the ground floor there is a spacious living room overlooking the front of the home, an open plan kitchen/dining space with French doors, a W.C. plus a handy utility area. To the first floor, you will find the master bedroom with en-suite shower room, three further bedrooms and a family bathroom. This home also benefits from an integral garage with driveway and a rear garden.



**karbon**  
living

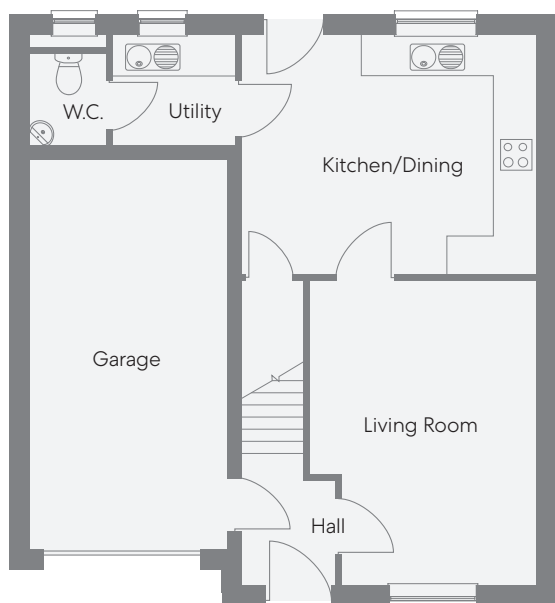
Homes for you to rent or buy.

For more information, please contact us at:

**[salesandlettingskarbonhomes.co.uk](mailto:salesandlettingskarbonhomes.co.uk) | 0191 223 8749**

or visit **[karbonhomes.co.uk](https://www.karbonhomes.co.uk)**

Images for illustration purposes only. Room sizes included have been measured from architect's plans and any furniture added is intended to give a general indication of the proposed floor layout only and does not form any part of contract.



#### Ground Floor:

##### Living Room

15' 2" x 11' 0"

##### Kitchen/Dining

14' 7" x 11' 11"

##### W.C.

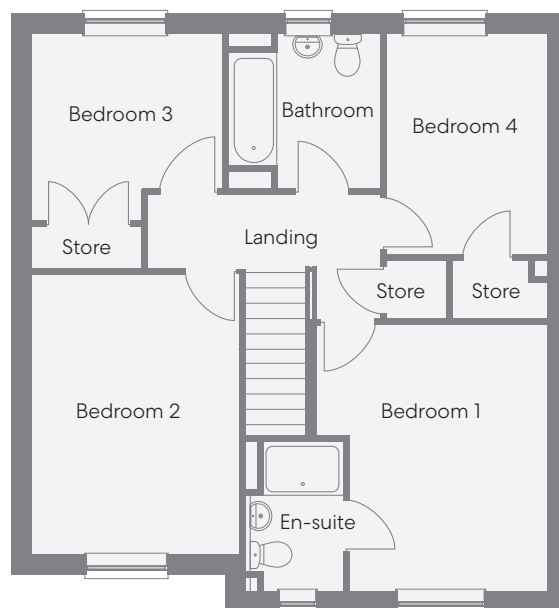
5' 5" x 3' 8"

##### Garage

19' 6" x 9' 10"

##### Utility

6' 3" x 5' 5"



#### First Floor:

##### Bedroom 1

13' 2" x 11' 0"

##### En-suite

7' 3" x 4' 7"

##### Bedroom 2

13' 11" x 10' 0"

##### Bathroom

7' 7" x 7' 6"

##### Bedroom 3

11' 5" x 9' 4"

##### Bedroom 4

10' 9" x 7' 7"

**karbon**  
living

Homes for you to rent or buy.

For more information, please contact us at:

**[salesandlettingskarbonhomes.co.uk](https://salesandlettingskarbonhomes.co.uk) | 0191 223 8749**

or visit **[karbonhomes.co.uk](https://karbonhomes.co.uk)**